



January 2012 Schedule

We have been advised by the Department of Health and Ageing that the January 2012 Schedule will remain in place until 29 February 2012. Regular monthly publication of Schedules will resume from 1 March 2012.

You still need to run the update for program changes and for any corrections to the DrugFile.

April Generic Drug Price Reductions

Generic drugs subject to price reductions of between 10% and 83% have been identified in PharmacyPro (in Orders and Dispense) as F2T drugs since September 2008.

If you are using PharmacyPro's suggested Orders, you should be able to manage your stockholding of these drugs so as not to be too adversely affected by the price reductions, ie. let PharmacyPro create orders for you (using the General Wholesaler Order) so that you will have the right stock on the shelf for customers during March (but little excess).

If you wish to reduce your liquidity to reduce the buffer stock taken into account in the ordering calculation, go to Orders, Settings, Order Settings, Liquidity.

Supplier Files

The following files have been updated in PharmacyPro this month.

As other suppliers send files during the month they will be available within PharmacyPro. From the PharmacyPro Start Menu go to Tools, Update, Download Supplier Files.

Almay	Maybelline
Amcal February 2 POS	Nadglen
Amcal February TPR POS	Pfizer
Ascent	Pharmacy Choice February
Central Health	Revlon Cosmetics
Dean Garbutt	Revlon Fragrances
Garnier	Sanofi
Guardian February TPR POS	SSS January 30 POS
Guardian January 26 POS	TE Marketing
Gibson Eyewear	You Save February 13 POS
L'Oreal	

IN THIS ISSUE:

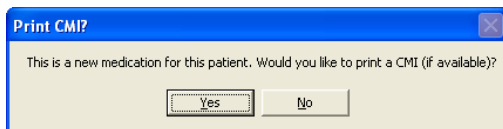
- **January 2012 Schedule**
- **April Generic Drug Price Reductions**
- **Supplier Files**
- **New Features**
- Dispense
- Claims
- Bulk Stock Edit Utility



NEW FEATURES

DISPENSE

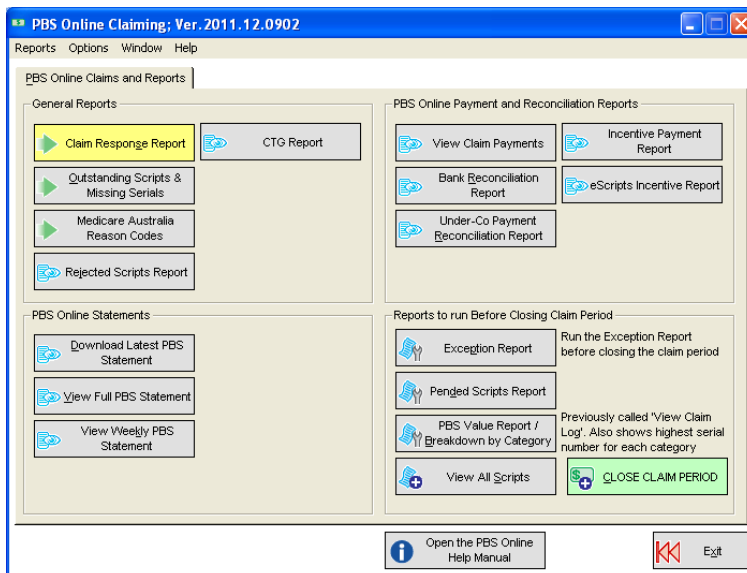
- We have added an "Add / Edit Intervention" button to the script screen.
This will bring up the interventions box and you can click the reason and grade. If you want a report showing the interventions, go to Reports, Script Reports, Interventions. Enter the date range required and click OK.
- The option 'Show Prompt for CMI Print on First Dispensing of a Drug' has been added so it prompts to print a CMI on first dispensing of a drug to a patient.



CLAIMS

The reports and buttons have been rearranged onto separate frames to group them logically.

- There are new buttons to open the PBSOL manual and to show pending scripts.
- The button previously called "View Claim Log" is now "PBS Value Report / Breakdown by Category".
- When you hover over a button it will give an explanation as to what the report or button does.
- The Exception Report provides more detail of why the script is in the Exception Report (and highlights scripts marked 'Pend' or 'Don't Claim'.)
- The "View All Scripts" report highlights scripts marked "Pend Rx" and those marked "Don't Claim". For CTG scripts, '(CTG)' is displayed in the serial number field.



BULK STOCK EDIT UTILITY

The option "and Keep Retail the same" has been added next to the change GST box. This allows the user to change / fix the GST value but keep the existing retail price.

